

# Networking via TCP/IP

## ProSeries Detectors

- Easily Mounts Inside Any ProSeries Detector
- RJ45 LAN and WAN Networks
- Works with CirrusPro and Cirrus ProNet Software

# PRO Series

## Cut Sheet

Part Number: 6198696

### Features

- Simple Installation and Connection
- Network detectors via RJ45
- Monitor detector network through LAN or WAN
- Static IP address for TCP/IP module
- Use with CirrusPro Software to access units
- Use with Cirrus ProNet Software for maximum versatility



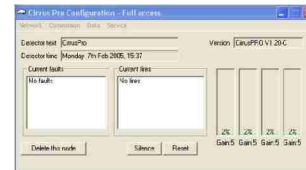
### Description

The ProSeries TCP/IP Interface Module is used to access a ProSeries detector network from any LAN or WAN via an RJ45 connection. The easy to install daughter board is simply mounted inside the detector and is configured using the CirrusPro software. When using the TCP/IP Interface, CirrusPro software (no charge) may be used to easily program, view, and troubleshoot any detector on the network. When used with Cirrus ProNet software, detailed detector and zone location information is automatically displayed when any detector enters an alarm or fault state.

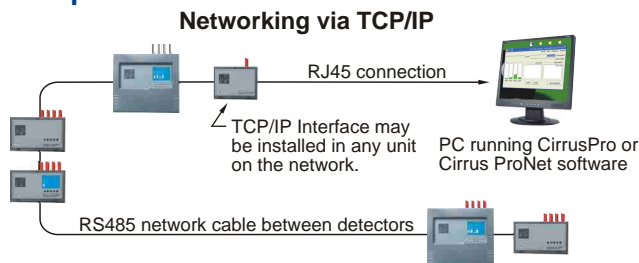
### Software Options

#### CirrusPro Software for PC

Available at no cost, CirrusPro Software will allow you to easily Program, View, Display Historic Graph and Event Logs, or Troubleshoot any detector on the network via a PC.



### Example



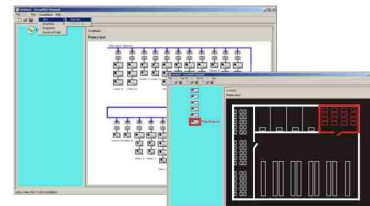
#### Cirrus ProNet Software

Remotely monitor a network via the internet for Detector Status, Alarm Notification, and Zone Identification. Detailed graphic displays of the area are used to isolate alarms and display specific zone information. You may also Program, View, Display Historic Graphs and Event Logs, and Troubleshoot any detector on a network.

### Specifications

#### TCP/IP Interface Part #:6198696

Current Draw:	100mA @ 24 VDC
Mounting:	Stand offs on Geartray
Network Connection:	RJ45
Unit Connection:	Twisted Pair Shielded Cable
Operating Software:	CirrusPro Software Cirrus ProNet Software



**Note:** Please refer to all federal, state and local codes, and manufacturer's recommendations prior to design or installation. All systems must meet NFPA requirements and be designed using the manufacturer's calculation software.



SAFE Fire Detection, Inc.  
5915 Stockbridge Drive  
Monroe, NC 28110  
Phone: 704-821-7920  
Fax: 704-821-4327  
www.safefiredetection.com

This document is provided for informational purposes only and may not be reproduced in whole or part without express written permission from SAFE Fire Detection, Inc. SAFE Fire Detection, Inc. assumes no responsibility for the products suitability for a particular application. Specifications, designs and any information contained herein may change without notice.

Publication Number: 6198696 v1.3

©2009 SAFE Fire Detection, Inc.