

Linear Heat Detection (LHD) Application Bulletin

BAGHOUSE AND DUST COLLECTOR DETECTION

Baghouses - Dust Collectors

The shape and design of baghouses and dust collectors vary. The outer perimeter of the unit must be protected as illustrated in Figure 1. Depending on the design of the unit, ThermoCable™ may be run on an inner perimeter as well as seen in Figure 2. If required, detection cable may also be run in conduit to a higher level inside the unit.

Either guide wire or L-Brackets may be used to secure the detection wire approximately 36" above the base of the unit. When using L-Brackets, be sure to support the detection cable a maximum of every 5 feet.

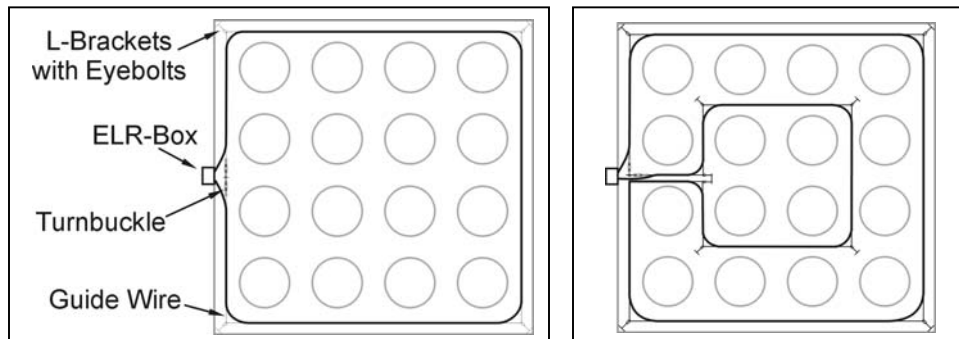


Figure 1

Figure 2

NOTE: Proximity detection as described in Section 5.2 may be used to protect blower motors and electrical equipment in the event of an overheating condition

These notes are to be used as general guidelines for installing ThermoCable™ linear heat detection (LHD) wire. Please be sure to check all local and state codes prior to designing and installing a system. It is advisable to contact the local AHJ in the planning stages of a project.

SAFE Fire Detection Inc.
5915 Stockbridge Dr.
Monroe, NC 28110
Phone: (704) 821-7920
Fax: (704) 821-4327
Website: www.safefiredetection.com
E-mail: staff@safefiredetection.com